

MAINSBOOST

iBOOST

MAINSBOOST iBOOST provides a boosted cold water supply of up to 100 litres per minute and up to 4.5 bar pressure, with a typical performance of 60 litres per minute at 3.0 bar pressure.

This reliable compact system will sit neatly within any standard 600 mm kitchen larder cupboard or alongside other household white goods.

In addition to the standard iBOOST CAT 3/4 model, the iBOOST CAT 5 option features a weir overflow making it suitable for use in applications where the risk of backflow contamination from Category 5 fluids exists.

Both iBOOST models are available with either fixed speed or variable speed pump controls.

The optional iBOOST +200 extension tank allows the stored water capacity of an iBOOST system to be increased to 400 litres.



Features

General

- Boosts cold water mains supply to 4.5 bar
- Flow rates up to 100 l/min
- 200 litre capacity water storage tank
- High flow, low noise equilibrium fill valve
- Dry run protection
- Simple installation and set up
- Optional +200 litre water storage capacity
- Category 5 fluid risk options
- Kiwa Reg 4 and WRAS approved products

iBOOST F200

- Fixed speed pump control

iBOOST V200

- Programmable variable speed pump control

Application

iBOOST F200 / iBOOST V200

- Boosting cold mains water pressure and flow in domestic and light commercial applications

iBOOST F200-CAT 5 / iBOOST V200-CAT 5

- Boosting cold mains water pressure and flow in laboratories, stables, kennels, waste bin stores and wash down stations

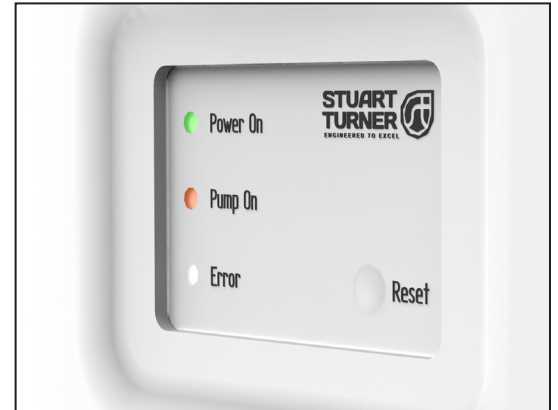
iBOOST +200 / iBOOST +200-CAT 5

- Expanding the water storage capacity of an iBOOST unit to meet high demand applications

iBOOST F200

The iBOOST F200 features a fixed speed pump control system capable of generating pressures of up to 4.5 bar and flow rates of up to 100 litres per minute.

- 200 litre capacity water storage tank with high flow, low noise equilibrium fill valve
- Slim and compact design
- Control panel and status indicators
- Simple installation and set up
- Dry run protection



iBOOST V200

The iBOOST V200 features the same capabilities as the F200 unit with the added benefits of an advanced variable speed pump control system. This enables the unit to supply water at a constant programmable water pressure as the water demands on the system change.

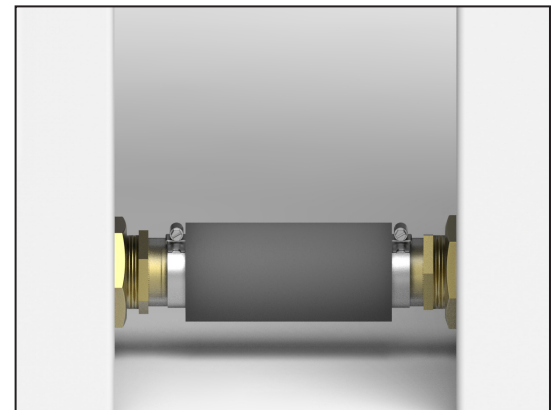
- Automatically adjusts pump speed to meet actual water demand and maintain stable water pressure
- Provides a 'soft start' when outlets are opened
- Optimises pump efficiency, power consumption and lifespan
- Quiet operation



iBOOST +200

The iBOOST +200 water storage extension tank effectively doubles the capacity of an iBOOST F200 or V200 unit from 200 litres to 400 litres.

- Additional 200 litre capacity water storage tank with high flow, low noise equilibrium fill valve
- Extended run times, reduced chances of running dry
- Simple installation, connection to main iBOOST unit tank can be made through the tank sides with the kit supplied



iBOOST CAT 5

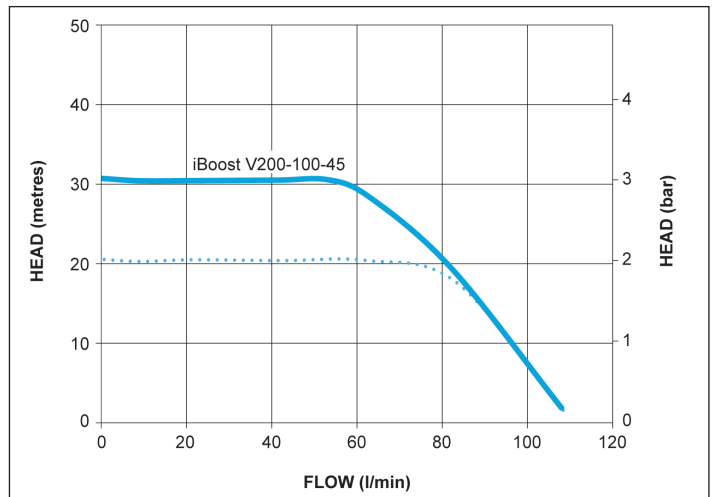
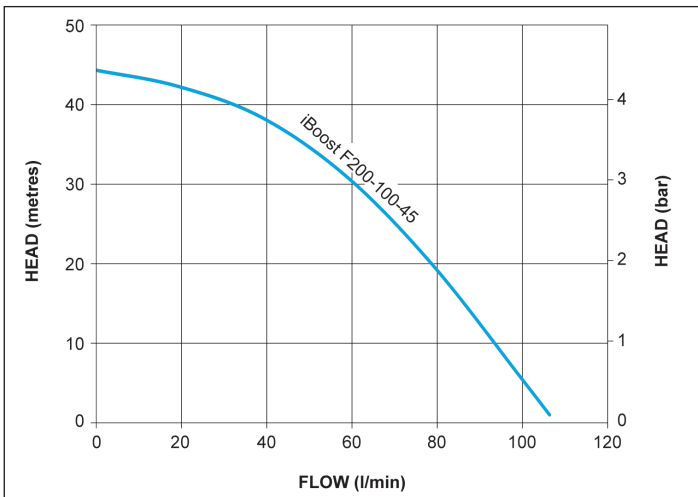
All standard iBOOST units are rated for CAT 3/4 fluids and are also available as a CAT 5 version making them suitable for use in high risk Category 5 fluid applications.

- Type AB air gap
- Weir overflow

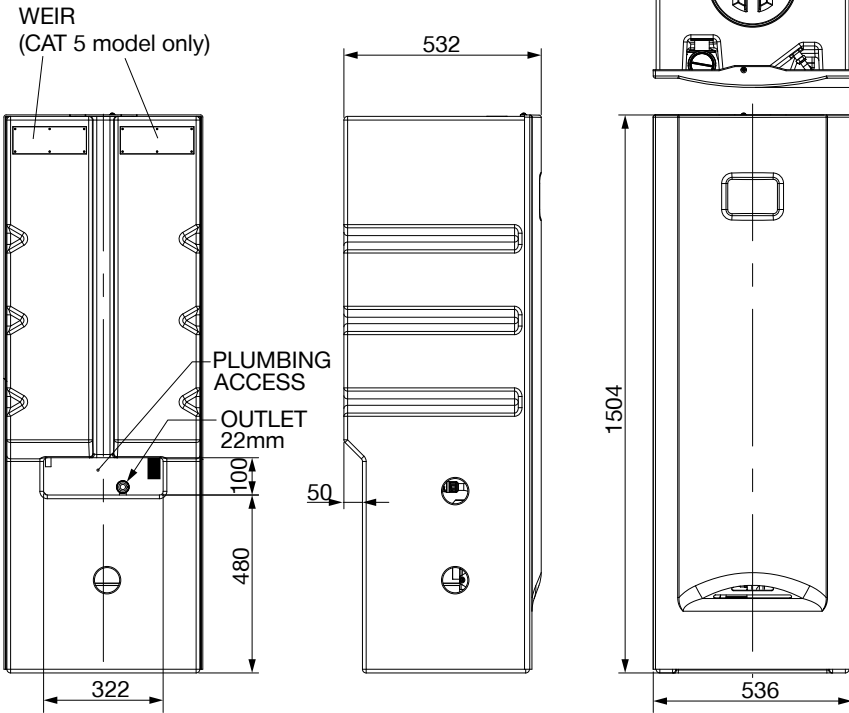


iBOOST Model		F200 46668	F200-CAT 5 46677	V200 46711	V200-CAT 5 46713	+200 46712	+200-CAT 5 46714	
General	Warranty	3 years						
	Approval certification	Kiwa Reg 4 WRAS Approved Product						
	Conformity certification	UKCA CE						
Features	Pump control system	Fixed speed, pressure switch		Variable speed, pressure transducer		-	-	
	Control interface	Standard controls		Programmable controls**		-	-	
	Flexible connection hose – outlet	●		●		-	-	
	Dry run protection	●		●		-	-	
	Typical noise	62 dB(A)		57 dB(A)		-	-	
	Fluid risk compatibility	CAT 3 / CAT 4	CAT 5	CAT 3 / CAT 4	CAT 5	CAT 3 / CAT 4	CAT 5	
	Water tank air gap	Type AF	Type AB	Type AF	Type AB	Type AF	Type AB	
	Pressure vessel	8 litres		8 litres		-	-	
Performance	Maximum head – nominal closed valve	4.5 bar (45 metres)					-	-
	Maximum flow rate	100 l/min					-	-
	Maximum inlet pressure – static	7 bar ((700 kPa)					-	-
	Maximum outlet pressure – static	15 metres					-	-
	Ambient air temperature	Min 4 °C – Max 30 °C				Min 4 °C – Max 30 °C		
Water tank	Nominal water tank size	220 litres					-	-
	Usable water capacity	200 litres					-	-
	Float valve type	Equilibrium					-	-
	Water tank fill rate	20 l/min*					-	-
Connections	Inlet connection	G ½ M			G ½ M			
	Pump outlet connection	G ¾ M			-	-		
	Outlet – flexible hose	G ¾ F x 22 mm push-in (220 mm long)					-	-
	Overflow	G 1¼ comp	G ¾ comp	G 1¼ comp	G ¾ comp	G 1¼ comp	G ¾ comp	
Materials	Water tank	Polyethylene				Polyethylene		
	Front panel	Acrylic capped ABS				Acrylic capped ABS		
Pump	Pump type	Multistage centrifugal					-	-
	Pump body	Brass / stainless steel					-	-
	Pump impeller	Stainless steel					-	-
	Duty rating	Continuous (S1)					-	-
	Motor type	Induction motor (thermal trip, auto reset)		Induction motor (current overload sensor)			-	-
Electrical	Power supply (Vac/Ph/Hz)	230 V a.c. / 1 / 50 Hz					-	-
	Power consumption – P1	1260 Watts		996 Watts			-	-
	Current – full load	5.5 Amps		6.8 Amps			-	-
	Fuse rating	10 Amps					-	-
	Power cable length	3 metres (pre-wired)					-	-
Physical	Width	536 mm					-	-
	Depth	529 mm					-	-
	Height	1504 mm					-	-
	Weight – including fittings	55 Kg		56 Kg			35 Kg	
	Weight – filled	255 Kg		256 Kg			235 Kg	

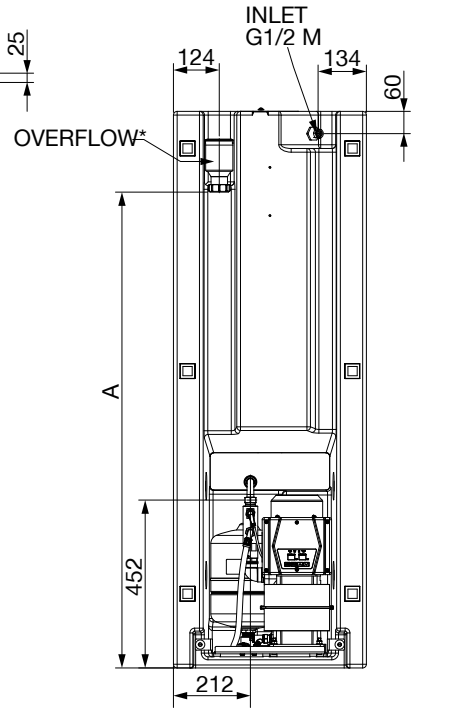
*Assumes 1 bar inlet pressure. **Variable speed pre-set to 3.0 bar, adjustable in 0.1 bar increments.



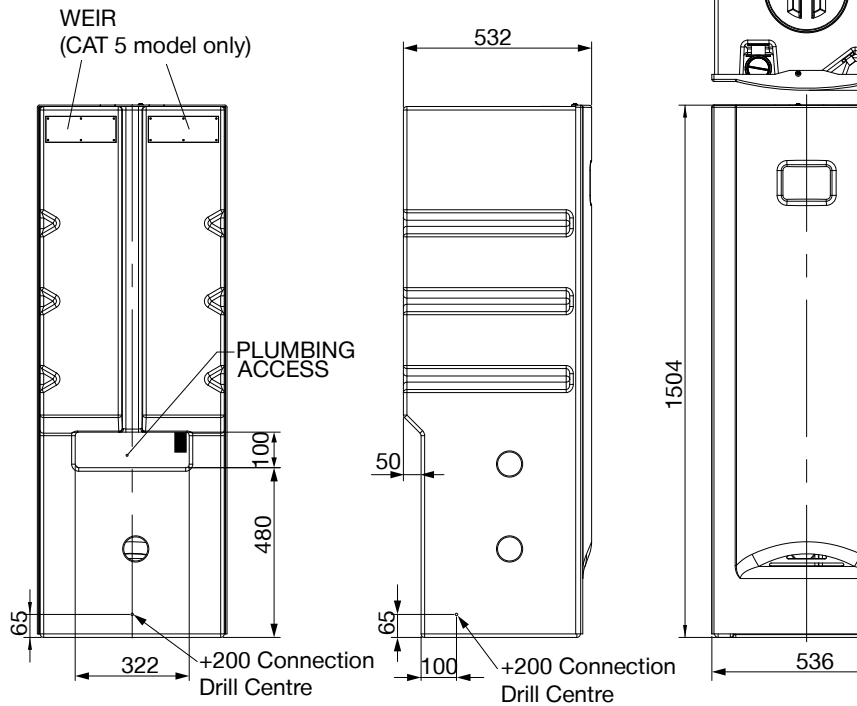
iBOOST F200/V200/CAT 5



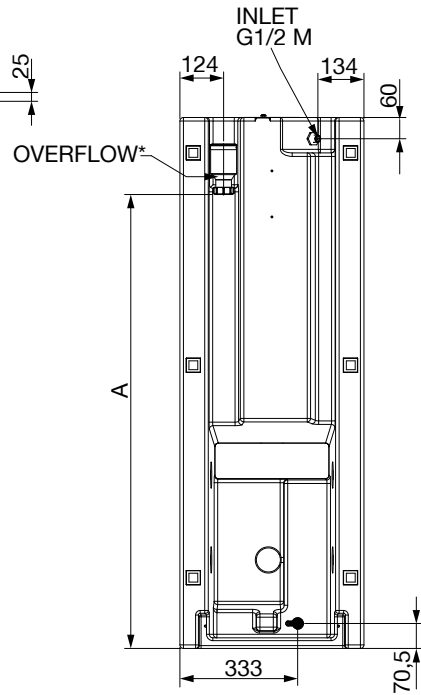
Pump Description	Dim. 'A'	Overflow*
iBOOST F200/V200	1282 mm	G 1¼
iBOOST F200/V200 CAT 5	1299 mm	G ¾



iBOOST +200/+200-CAT 5



Pump Description	Dim. 'A'	Overflow*
iBOOST +200	1282 mm	G 1¼
iBOOST +200-CAT 5	1299 mm	G ¾



Stuart Turner Limited reserves the right to amend specifications without notice.

Stuart Turner Ltd, Henley-on-Thames, Oxfordshire RG9 2AD Tel: +44 (0) 1491 572655 Fax: +44 (0) 1491 573704
 TechAssist Helpline +44 (0) 800 31 969 80
www.stuart-turner.co.uk

Pt. No. 20601 Issue 2023-02-03